

The DEAF AND DUMB ALPHABET

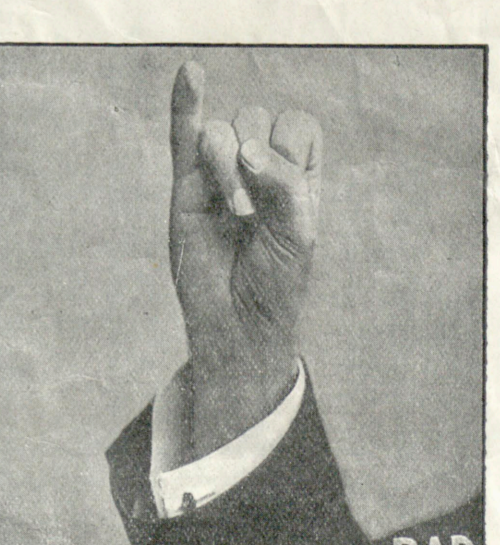
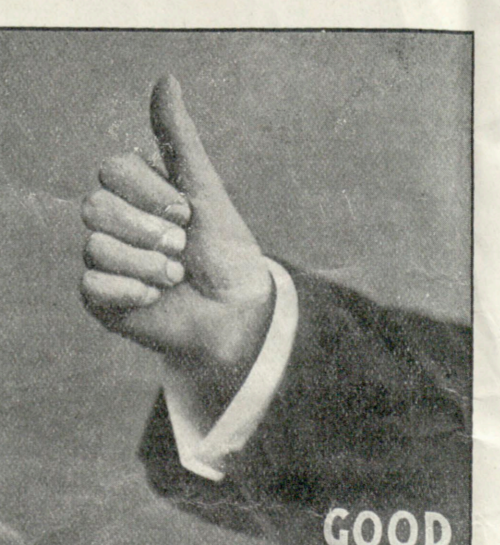
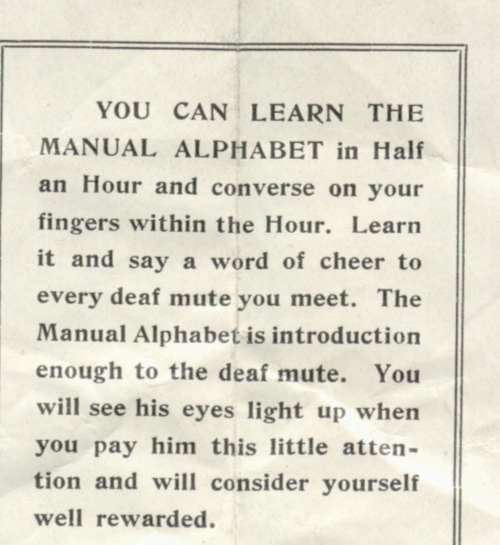
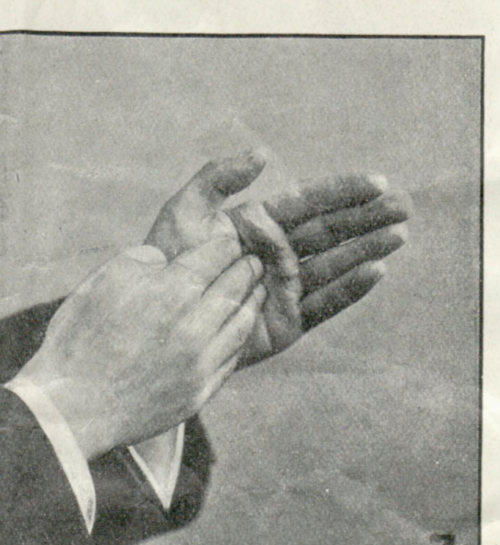
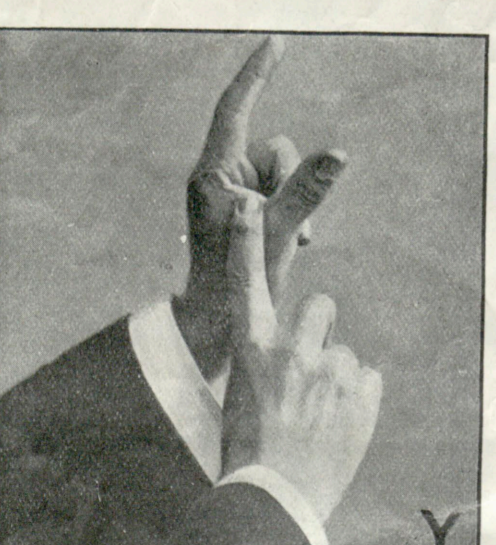
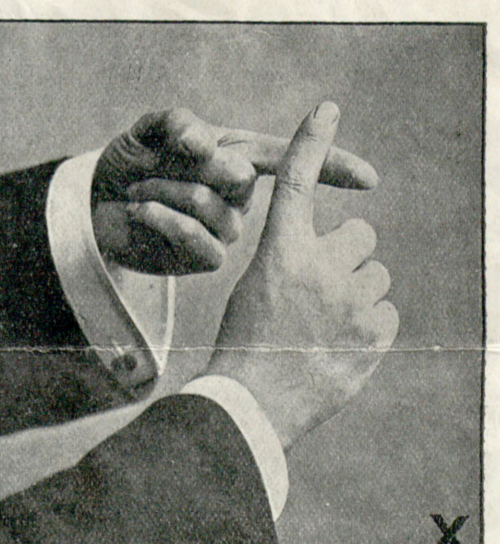
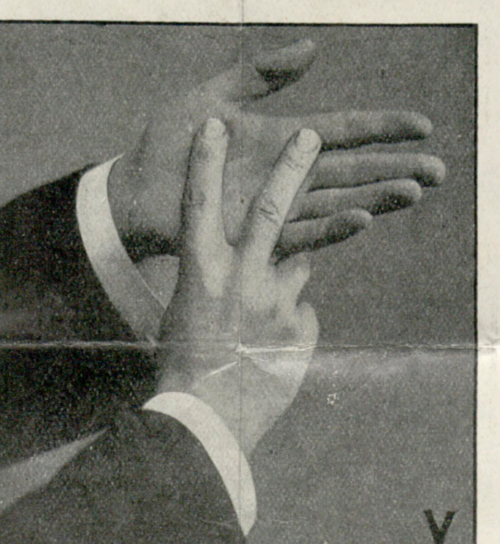
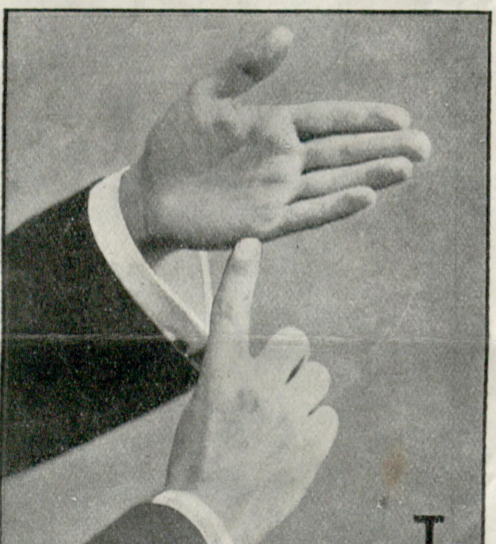
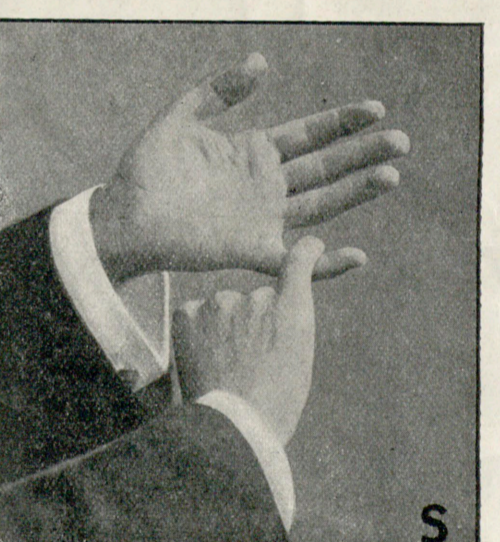
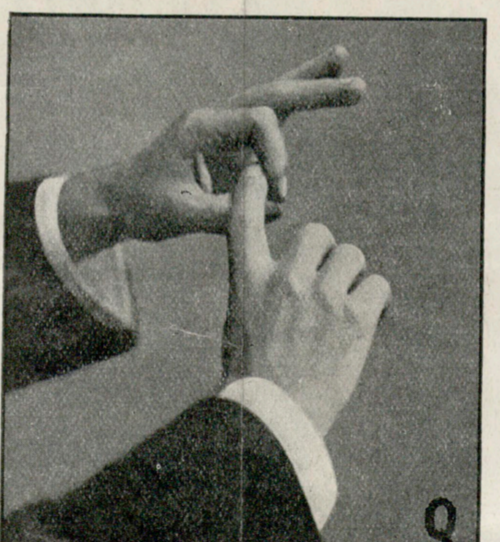
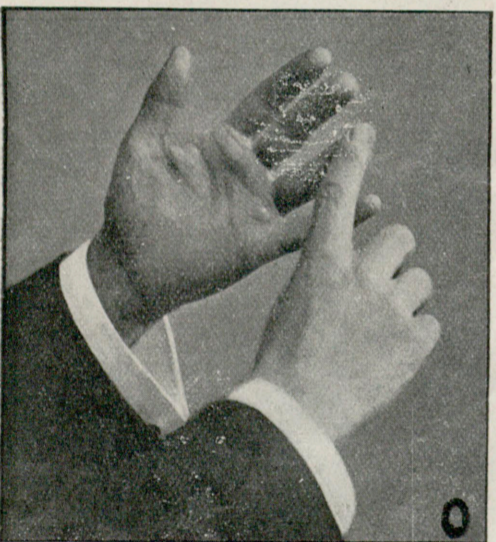
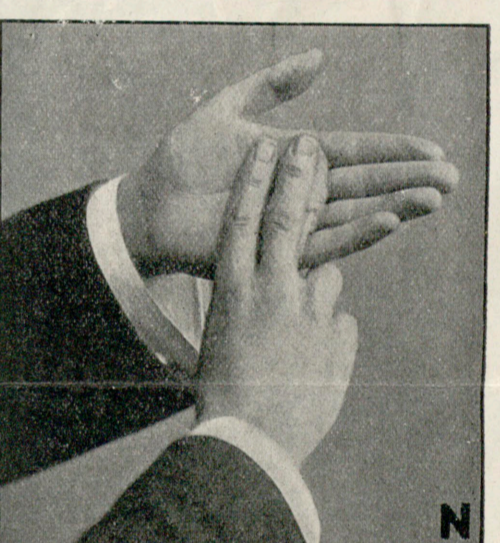
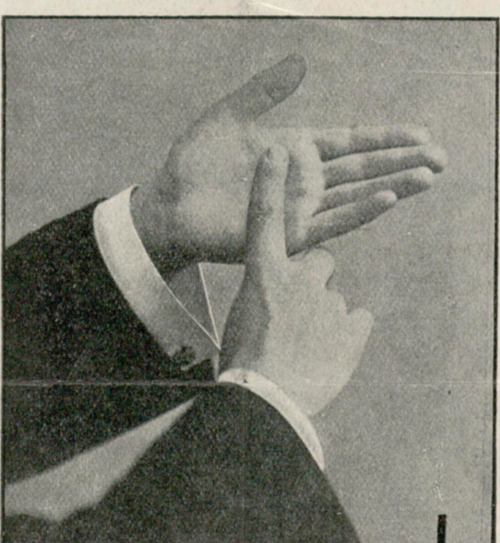
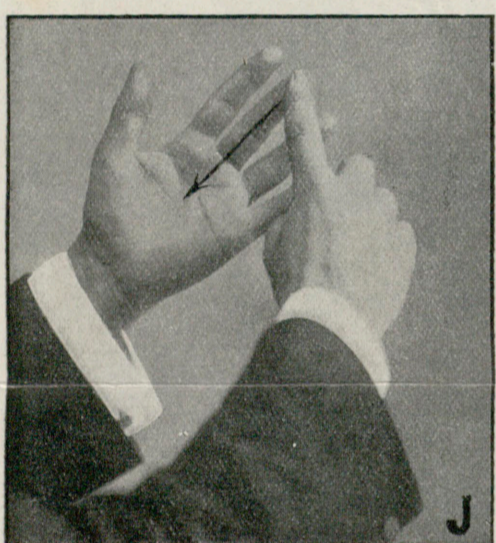
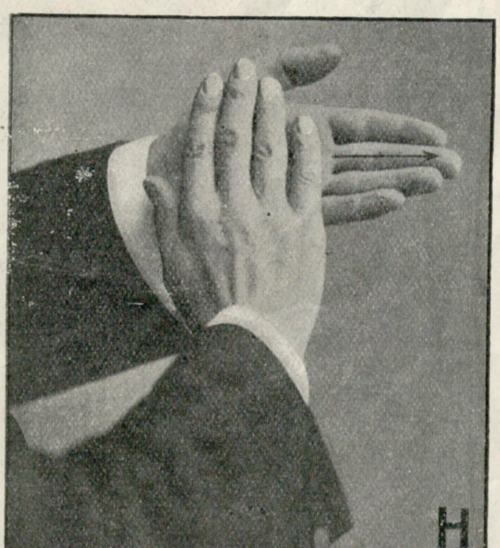
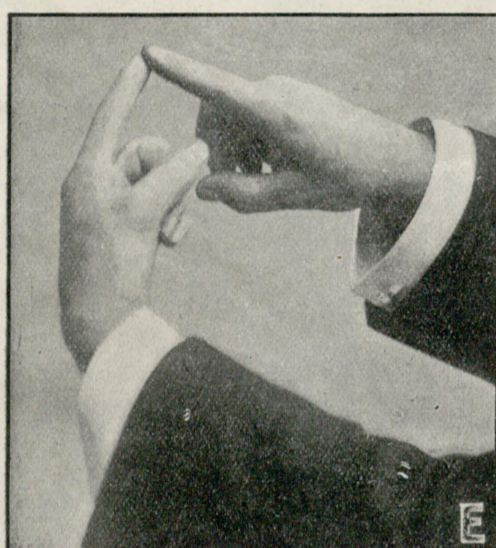
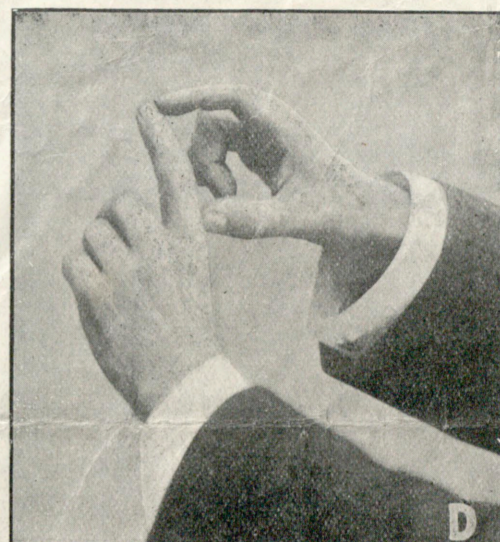
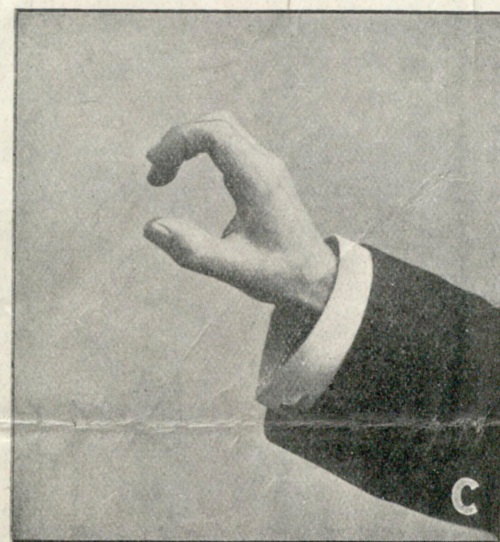
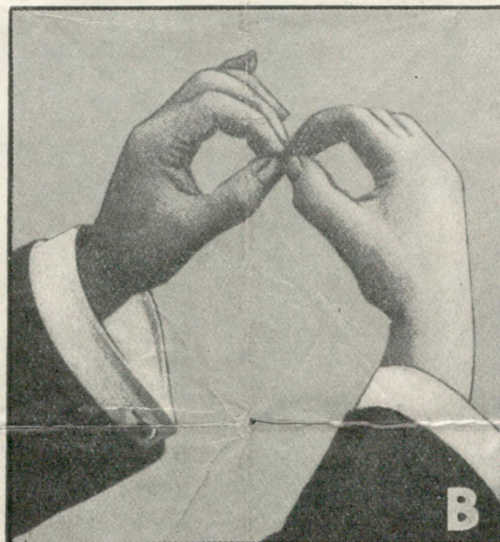
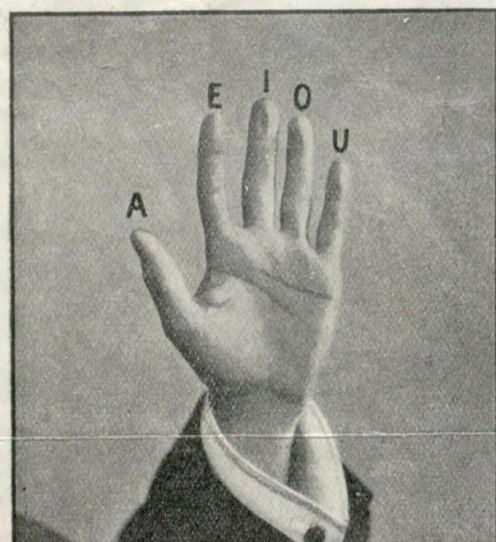
PUBLISHED BY THE
ADULT DEAF AND DUMB SOCIETY OF VICTORIA

Headquarters: JOLIMONT SQUARE, MELBOURNE

This Society aims at being **EVERYTHING** to the Deaf and Dumb of this State except a School for Children.

Providing Church for Divine Worship in their own language, Club House for Social Gatherings, Administrative Buildings and Offices for Assistance, Advice, Care and Training, and Homes for the Aged, the Infirm and the Mentally Defective Deaf and Dumb.

Patrons—His Excellency The Governor Col. The Right Hon. Lord Somers, K.C.M.G., D.S.O., M.C.; The Right Hon. The Lord Mayor of Melbourne.
President—Mr. E. R. Peacock, J.P. Chairman—Councillor N. Armstrong, J.P.



YOU CAN LEARN THE MANUAL ALPHABET in Half an Hour and converse on your fingers within the Hour. Learn it and say a word of cheer to every deaf mute you meet. The Manual Alphabet is introduction enough to the deaf mute. You will see his eyes light up when you pay him this little attention and will consider yourself well rewarded.

YOU WOULD LIKE TO HELP THIS WORK—

The Hon. Treasurer, Mr L. A. Cleveland, 20 Queen St., Melbourne, will welcome your contribution and promptly acknowledge it.

YOU WOULD LIKE FURTHER PARTICULARS OF THIS WORK—

The Hon. Secretary, Mr. R. J. Oehr, F.I.C.A., 59 William St., Melbourne, will with pleasure give you any information you require.

YOU KNOW OF DEAF AND DUMB PEOPLE WHO NEED ADVICE OR ASSISTANCE—

Drop a line to the Principal, Adult Deaf and Dumb Centre, Jolimont Square, Melbourne East, giving particulars, and he will attend to the case.

By tacking this up in some prominent position you will be rendering a service of kindness to your fellow-citizens who are heavily handicapped and permanently isolated from social intercourse with their fellow-men.